



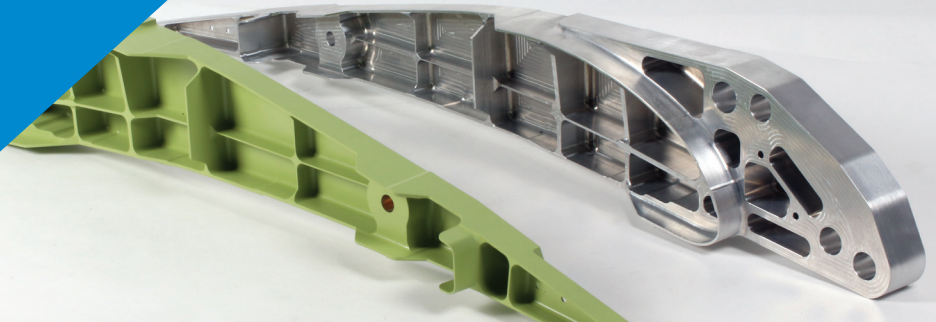
## Engineering quality solutions for customers satisfaction

BCW Engineering is one of the UK's most advanced, vertically integrated precision engineering companies. Through a clear strategic vision, our approach is quite simple; to provide our customers with a quality cost-effective supply chain solution to not only meet expectations but to exceed them.

This has seen BCW grow and partner with some of the world's global OEMs and Tier 1s across multiple sectors such as automotive, aerospace, mining, power generation, rail and more.



With BCW your  
business is in  
the right hands



## Proactive problem solvers offering vertically integrated solutions

Our services start from the very beginning of the process. Through BCW's design expertise, coupled with a technical engineering solution, we offer a unique opportunity to provide the best manufacturing process for your desired products at the highest quality and cost.

Machining is at the core of what we do, whether it be prototype, pre-production, low, medium or high-volume production. We then link in other value-added processes such as design, assembly, fabrication and treatments which are all vertically integrated.

### Key Features

- Business units spanning over 200,000 sq ft
- Operational CNC spindle hours in excess of 350,000 per annum
- 3/4/5 axis machining centres
- Machining capacity up to 3 metres x 1.5 metres in size
- Unique service offering a single source for design, prototype, pre-production through to full production
- Total supply chain service provider for multiple sectors including major automotive OEMs and Tier 1s
- Dedicated NPI & programme management
- Situated in a prime location to serve the UK and beyond, with access to major transport links and within close proximity to Manchester, Liverpool and Leeds Bradford airports

### BCW offer the manufacture of machined components from:

- Aluminium & steel castings
- Aluminium extrusions
- Hot, cold & warm steel forgings
- Aluminium forgings
- Billet materials such as brass, copper, titanium, Nimonic & stainless

